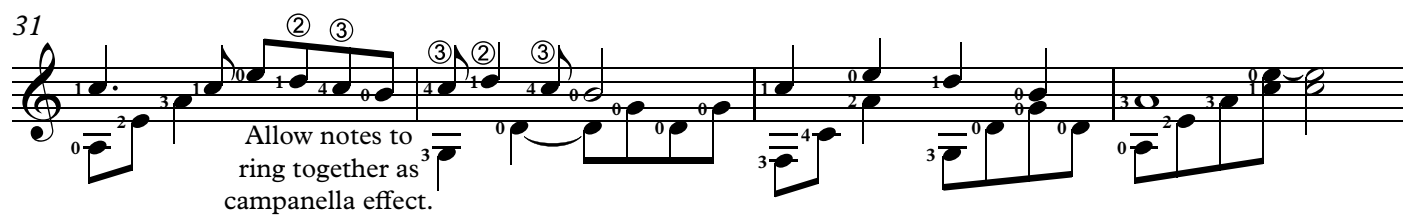
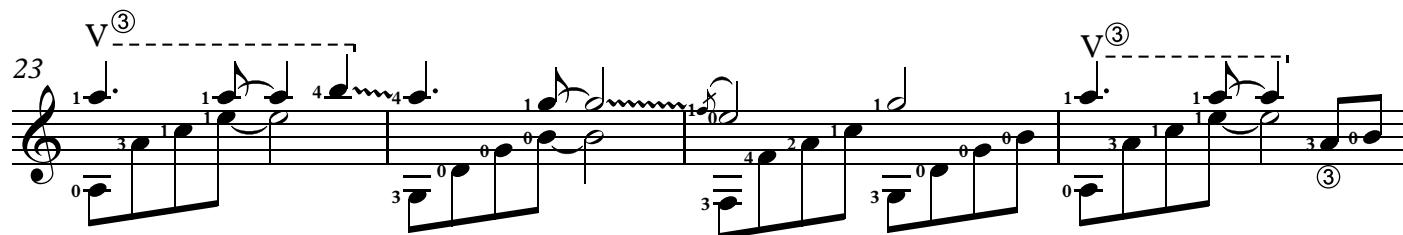
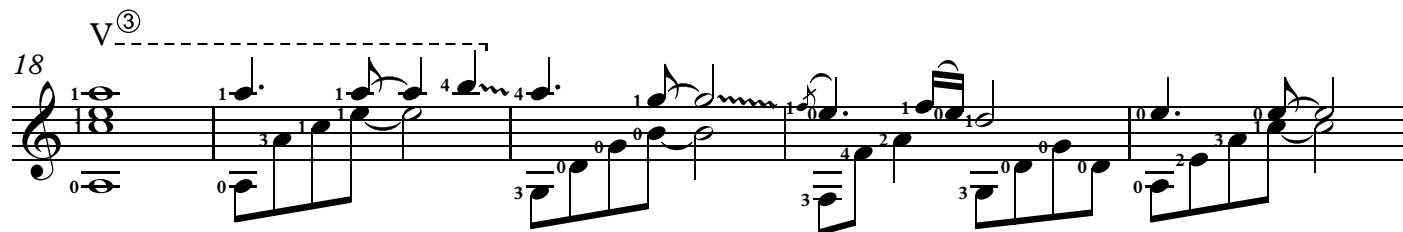
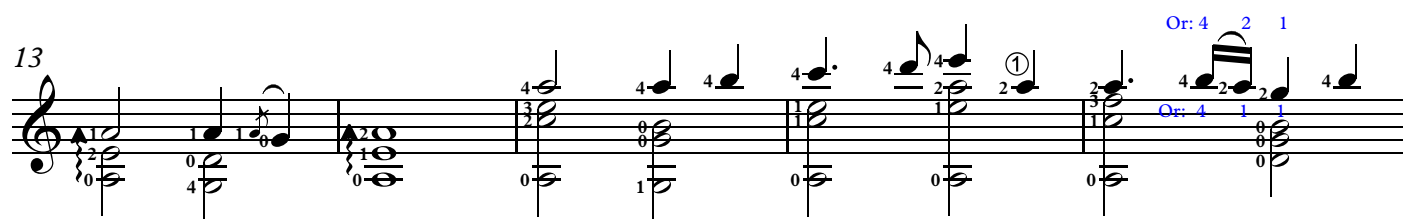
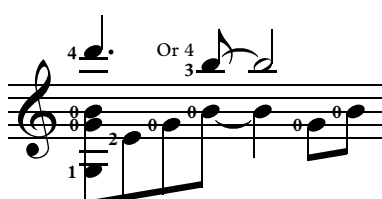
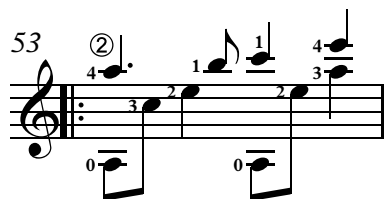
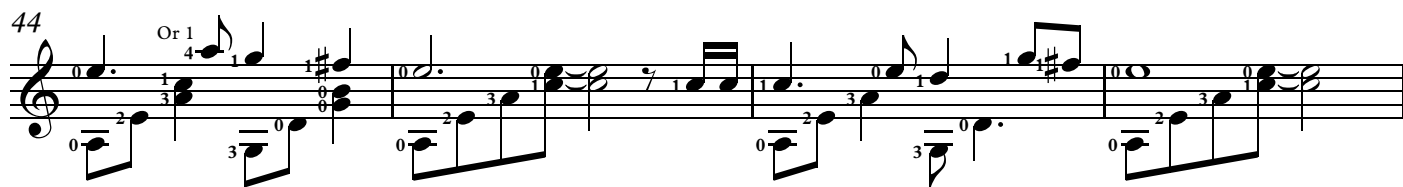
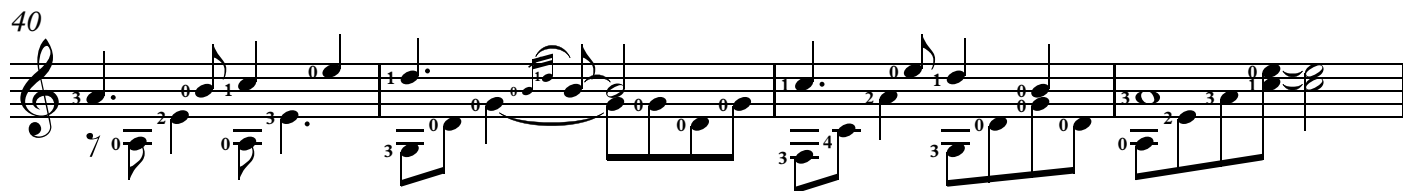
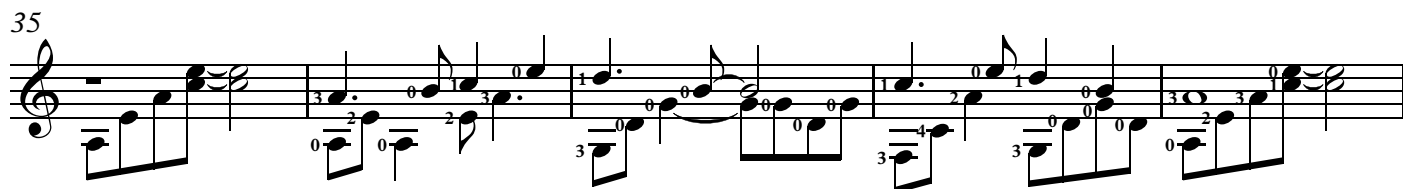


# Skellig

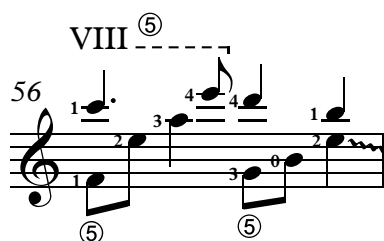
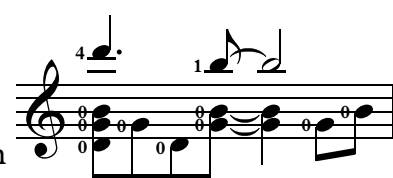
Loreena McKennitt  
Arranged Douglas Niedt

⑥ = D      ↑ = downstrum (towards the floor) with thumb (these are optional).  
Or, the chords can be "rolled" with thumb and fingers (also optional).

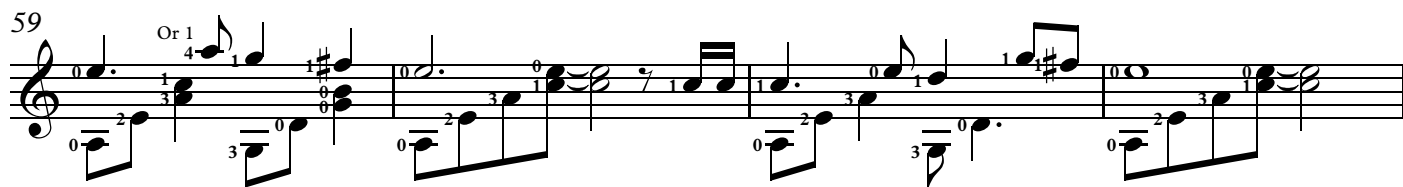
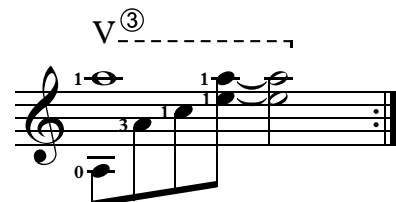




OR:  
easier  
version



OR:  
easier  
version



68  $I^{(2)}$

72  $I^{(2)}$

76  $V^{(3)}$

80  $V^{(3)}$

85  $V^{(3)}$

90

Right-hand harmonic  
(artificial harmonic)  
1st string, 12th fret  
plucked with *a*.

Touch 1st string  
at 12th fret with *i*.  
Pluck harmonic  
with *a*. Pluck  
2nd-string C  
with *m* or *p*.

OR:

rall. . . . .